



NAVIGATING ENVIRONMENTAL CHALLENGES WITH INNOVATIVE SOLUTIONS.

OUR MISSION: TO PROVIDE EXPERT GUIDANCE AND INNOVATIVE SOLUTIONS THAT EMPOWER OUR CLIENTS AND SUSTAIN BIODIVERSITY AMIDST AN EVOLVING SOCIETY.

Endemic Environmental Services, Inc. is a renowned multidisciplinary environmental consulting firm that serves public and private sector clients. Our team members apply their scientific expertise, experience, initiative, and innovation to natural resource management.

At our organization, we are committed to promoting and sustaining biodiversity in a world that is constantly evolving. Our mission is to provide clients with the highest level of expert guidance and innovative solutions tailored to meet their unique needs and challenges.

OUR VALUES

RESPONSIVENESS AND HARDWORK

We provide excellent service by exceeding client expectations, staying updated with industry developments, engaging professional organizations, and encouraging continuous learning for team success.

PROBLEM-SOLVING ATTITUDE

We are known for using innovations in technology and diligence to help our clients in significant ways. We prioritize active listening and support our clients in overcoming challenges. Our staff is empowered to develop practical solutions.

FAIRNESS, RESPECT, RESPONSIBILITY

We value treating our clients with dignity, fairness, and respect during negotiations. Our goal is to establish long-lasting and trustworthy relationships. We believe work-life balance is essential, and we promote flexibility for our team and clients.

COLLABORATIVE ACTION

We promote teamwork by sharing knowledge and bringing diverse perspectives to our clients, allowing us to share the lessons learned and the effectiveness of different approaches.





Biological Services

Our biologists have the certificates and permits to conduct surveys and prepare conservation plans for federal and state-regulated species (e.g., gnatcatcher, bats, arroyo toad, desert tortoise, western pond turtle, kangaroo rat, least Bell's vireo, giant garter snake, central valley steelhead). Our biologists have extensive knowledge of the habitat requirements, behavior, and conservation status of various species and use this knowledge to develop effective conservation plans designed to ensure these species' long-term survival.



Marine Services and Assessments

Our skilled marine and freshwater biologists perform various hydrological assessments and aquatic surveys. We provide real-time analytics for water monitoring and sampling, fish surveys, and rapid bioassessment. We have extensive experience with Stormwater Pollution Prevention Plans (SWPPP) and monitoring, sampling, and analysis. Aquatic stream bed and creek bed surveys can be performed depending on natural conditions.



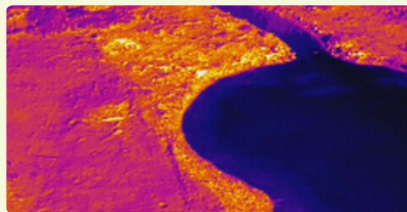
Habitat Restoration and Remediation

We use an active adaptive management strategy and deep ecological knowledge to design and implement informed habitat restoration plans. We aim to prioritize cost-effectiveness, organized scheduling, and clearly defined processes to establish high-quality native vegetation communities that comply with all agency requirements and government regulations. We use easily interpretable restoration plans and techniques to control costs and make informed decisions throughout the maintenance and monitoring periods.



Stormwater Services

Our certifications include Qualified SWPPP Developer (QSD), Qualified SWPPP Practitioner (QSP), Certified Professional in Erosion and Sediment Control (CPESC), Certified Erosion, Sediment, and Stormwater Inspector (CESSWI), and Certified Inspector Sediment and Erosion Control (CISEC). We have teamed with contractors for roads/highways/bridges to improve stormwater management on their properties with our experience in developing stormwater pollution prevention plans (SWPPPS), conducting inspections, and helping clients comply with federal, state, and local stormwater regulations.



Drone and GIS Services

We use photos, renderings, 3-D animation, and GIS applications to bring spatial plans and maps of wetland habitats, invasive and non-invasive plants, and animal species. Our infographics help to communicate complex issues and information to our stakeholders. EES has advanced drones with specialized equipment for ecological purposes. We use project management software to control job costs, accounting, purchasing, and scheduling.



Environmental Compliance

We are experienced in meeting the requirements of both state and federal procedures pertaining to CEQA and NEPA documents for public and private projects. We can complete all technical reports required for clearance and approval. We will provide inter-agency coordination and assistance to obtain the required resource agency permits and help acquire and maintain funding and reimbursements from regional, county, state, and federal agencies.



Utilities and Wetland Delineation

Endemic has conducted jurisdictional wetland delineations throughout the northern and southern California regions for land development, road construction, restoration, and telecommunication projects. Our experienced wetland delineators will coordinate with agencies, collect field data, evaluate project site conditions, and provide guidance and recommendations for the site design in the early stages of project development.

